

State of Ohio First Responder Radiological Emergency Procedures and Resources

John M Wills, RRPT
Ohio Department of Public Safety
Emergency Management Agency
Radiological Branch
440.918.5395
radiationguy@earthlink.net

Procedures

- Recognize presence of radioactivity:
 - Labels, markings, placards, shipping papers, shipper, signage, facility manager, instrument reading
- Save Lives:
 - Rescue, triage, treat, transport
- Isolate area:
 - Rope off, evacuate from hot zone, decontaminate
- Notify:
 - ODH

Resources

- | | |
|--|---|
| <ul style="list-style-type: none"> • County <ul style="list-style-type: none"> – EMA – Hazmat Team – Hospital • State <ul style="list-style-type: none"> – ODH – ODPS-OEMA – OEPA – PUCO – 52nd WMD CST | <ul style="list-style-type: none"> • Federal <ul style="list-style-type: none"> – RAP – NARAC – REAC/TS – AMS – CMRT I, II, FRMAC – ARG – NEST • Private <ul style="list-style-type: none"> – Licensees |
|--|---|

Sources of Equipment Support

Sources of Equipment Support

- ODPS-OEMA
 - Civil Defense Equipment at no cost
 - Contact County EMA for request to OEMA
 - CDV-777-1 detector set consisting of:
 - CDV-700: 0-50 mR/hr gamma dose rate meter / 0-30,000 cpm beta/gamma contamination detector
 - CDV-715: 0.05 R/hr – 500 R/hr gamma dose rate meter
 - CDV-742: 0-200 R gamma direct-reading dosimeters (6)
 - CDV-750: direct-reading dosimeter charger
 - CDV-700RP or CDV-700M: 0-30,000 cpm alpha/beta/gamma contamination detector
 - CDV-718: 0 μ R/hr – 10,000 R/hr gamma dose rate meter
 - Beta detection capability
 - 0 μ R – 10,000 R electronic alarming dosimeter

Sources of Equipment Support

- HDER
- Homeland Defense Equipment Reuse Program
 - Government surplus instruments at no cost
 - Contact: Dan Redman, Ohio EMA (614)688-3363
 - Grants
 - Federal grants administered by OEMA given to County EMAs:
 - planning, training, equipment
 - Contact your County EMA

Sources of Training Support

Sources of Training Support

- ODPS-OEMA
 - Contact County EMA for request to OEMA:
 - OH200: 12 hour course consisting of radiation basics, biological effects, dose limits, meters and dosimeters, emergency response, with hands-on workshops.
 - OH215: 8 hour course consisting of detection, decontamination operations, and hands-on workshop.
 - OH205: 4 hour course consisting of meters and dosimeters, dose limits, with hands-on workshop

Sources of Training Support

- ODH
 - Contact County EMA for request to ODH:
 - G346 Hospital Management of Radiological Patients

Sources of Training Support

- DHS-FEMA:
 - Individual Study:
 - available at <http://training.fema.gov/EMIWeb/IS/crslist.asp>
 - IS-3: Radiological Emergency Management
 - IS-301: Radiological Emergency Response Operations
 - IS-346: An Orientation to Hazardous Materials for Medical Personnel
 - Resident courses at Noble Training Facility, Anniston, Alabama (Fort McClellan):
 - Description at: <http://training.fema.gov/EMIWeb/downloads/EMICatalog0304Part1.pdf>
 - Schedule at: <http://training.fema.gov/EMIWeb/EMICourses/rc1st2003.asp#First>
 - S-301: Radiological Emergency Response Operations (4½ days)
 - S-302: Advanced Radiological Incident Operations (4½ days)

Sources of Training Support

- DHS-ODP:
 - Courses available at your department and at the Nevada Test Site.
 - Description at: <http://www.ojp.usdoj.gov/odp/docs/coursecatalog.pdf>
 - Schedule contact OEMA Debra Hartman 614-799-3824
 - AWR-140 WMD Radiological/Nuclear Awareness
 - AWR-141 WMD Rad/Nuc Awareness Train-the-Trainer
 - PER-240 WMD Radiological/Nuclear Responder Operations Course
 - PER-241 WMD Radiological/Nuclear Course for HazMat Technicians

Sources of Training Support

- DOE-REAC/TS:
 - Resident courses at Oak Ridge, TN. Schedule available at <http://www.orau.gov/reacts/courses.htm>
 - Medical Planning and Care in Radiation Emergencies
 - Handling Radiation Emergencies by Emergency Department Personnel
 - Health Physics in Radiation Emergencies

Sources of Response Support

Sources of Response Support

- STATE of OHIO:
 - ODH: (614) 644-2727
 - ODPS-OEMA: (614) 889-7150
 - OEPA: (614) 282-9378
 - PUCO: (614) 644-5479
 - 52nd WMD CST: (614) 336-6597

Sources of Response Support

- Ohio Department of Health, Bureau of Radiation Protection
- **(614) 644-2727** 24-hr emergency
 - Situation assessment
 - protective action advice to the Incident Commander
 - assist local responders



Sources of Response Support

- Ohio Department of Public Safety - Emergency Management Agency
- **(614) 889-7150** 24-hr emergency
 - assist local responders
 - locate resources for the Incident Commander
 - make Federal notifications

Sources of Response Support

- Ohio Environmental Protection Agency
- **(614) 282-9378** 24-hr emergency
 - assist local responders
 - assess dose
 - sample environment
 - facilitate cleanup

Sources of Response Support

- Public Utilities Commission of Ohio
- **(614) 644-5479** 24-hr emergency
 - Conduct radiological surveys and contamination control surveys of radiological shipments
 - Conducting investigations at the scene of trucking, rail, and hazardous materials accidents
 - Identification of hazardous materials, and ensuring proper compliance with regulations for transport

Sources of Response Support

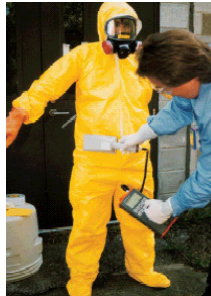
- Ohio Army National Guard, 52nd Weapons of Mass Destruction, Civil Support Team
- **(614) 336-6597** 24-hr emergency
 - Assess a suspected nuclear, biological, chemical, or radiological (NBC/R) event in support of a local Incident Commander
 - Advise civilian responders regarding appropriate response actions, and;
 - Assist requests for assistance to expedite arrival of additional state and federal assets to help save lives, prevent human suffering, and mitigate great property damage.

Sources of Response Support

- Federal:
 - RAP
 - NARAC
 - REAC/TS
 - AMS
 - CMRT I, II, FRMAC
 - ARG
 - NEST

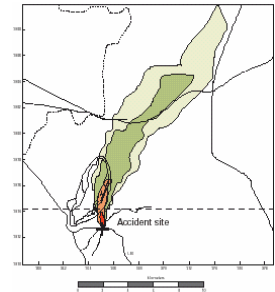
Sources of Response Support

- **RAP** – Radiological Assistance Program - first federal team on scene, responsible for assessing emergency situation and deciding what further steps should be taken to minimize the hazards of a radiological emergency.
- **(630) 252-4800** 24-hr emergency Chicago DOE Region 5



Sources of Response Support

- **NARAC** – National Atmospheric Release Advisory Capability – develops predictive plots generated by sophisticated computer models.
- <http://narac.llnl.gov>
- **(925) 424-6465** 24-hr emergency



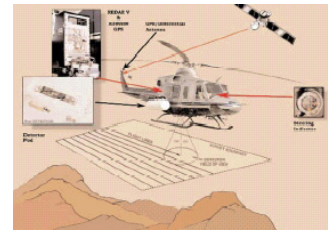
Sources of Response Support

- **REAC/TS** – Radiation Assistance Center/Training Site – provides treatment and medical consultation for injuries resulting from radiation exposure and contamination, as well as serving as a training facility.
- **(865) 576-1005** 24-hr emergency



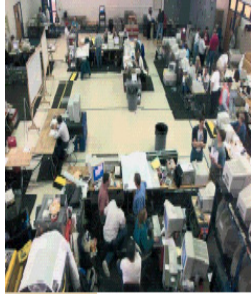
Sources of Response Support

- **AMS** – Aerial Measurement System – detects, measures, and tracks radioactive material to determine contamination levels.
- Requested through RAP



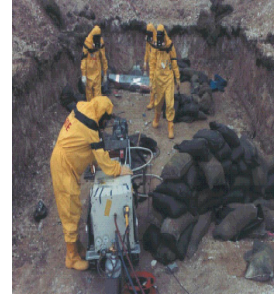
Sources of Response Support

- **CMRT Phase I, II, and FRMAC** – Consequence Mgt Response Team Phase I and II, and the Federal Radiological Monitoring and Assessment Center – coordinates Fed. monitoring and assessment activities.
- Requested through RAP.



Sources of Response Support

- **ARG** – Accident Response Group – deployed to manage or support the successful resolution of a U.S. nuclear weapon accident anywhere in the world.
- Requested through RAP.



Sources of Response Support

- **NEST** – Nuclear Emergency Support Team – provides the nation's specialized technical expertise to the Federal response in resolving nuclear/radiological terrorist incidents.
- Requested through RAP.



Sources of Response Support

- Licensees

